

# Practicing Social Justice in a Market Justice World.



**BARBARA JOYCE, PH.D., CNS., RN,  
ASSOCIATE PROFESSOR, BETH-EL COLLEGE  
OF NURSING AND HEALTH SCIENCES,  
UNIVERSITY OF COLORADO AT COLORADO  
SPRINGS**

**BRIAN KATES, MA, CPRP, FACILITY  
DIRECTOR, CITY OF COLORADO SPRINGS  
MEADOWS PARK COMMUNITY CENTER**

This material was developed by Barbara Joyce, Ph.D and is intended for classroom discussion rather than to illustrate effective or ineffective handling of administrative, ethical, or legal decisions by management. No permission or compensation is needed for classroom use as long as it is acknowledged to be the creative work of the author and the UCCS Daniels Fund Ethics Initiative. For publication or electronic posting, please contact the UCCS Daniels Fund Ethics Initiative at 1-719-255-5168. (2018)

# Background: Nurs 4400 Community Health



**6 CREDITS (3 THEORY, 3 CLINICAL: 96 HOURS  
OF COMMUNITY CONTACT TIME)**

**8 WEEK BLOCKED COURSE (EACH SEMESTER):  
TWO DAYS PER WEEK OF CLINICAL**

**ALL OPTIONS: (TRADITIONAL, ACCELERATED,  
RN-BSN)**

**CLINICAL FACULTY: 5 MASTERED PREPARED  
CLINICAL NURSE SPECIALISTS OR NURSE  
PRACTITIONERS (1:10)**

# Health Care Ethics



- **Beneficence**
- **Non maleficence**
- **Autonomy**
- **Justice**
  - Distributive (egalitarian, utilitarian)

# Public Health Code of Ethics



- Interdependence of people
- Essence of community
- Concern for population / not individual
  - Who is public health good for?
  - Who's health are we concerned with?
  - What individual sacrifices are necessary?

# Ethical Public Health Guidelines



- Address causes of disease
- Address requirements for health
- Aim to prevent adverse health outcomes
- Achieve community health while respecting rights
- Have input from community members
- Advocate for disenfranchised
- Provide communities with information
- Implement programs and policies
- Incorporate a variety of approaches

# Ethical Public Health Guidelines



- Implement programs & policies that enhances the environment
- Protect confidential information
- Ensure professional competence
- Engage in collaborations, affiliations and coalitions that build trust and effectiveness

# Ethics in Public Health



	<b>Professional</b>	<b>Research</b>	<b>Clinical</b>	<b>Public Health</b>
<b>Key Features</b>	ANA Code of Ethics	Statutes & Regulations	Nurse- Patient Relationship	Public Welfare Public Policy
<b>Principal Stakeholders</b>	Professionals	Research Subjects & Researchers	Providers Patients Family	Community Special Interest Groups Target Populations
<b>Guiding Concepts</b>	Beneficence	Autonomy Nonmaleficence Justice	Autonomy Beneficence Nonmaleficence	Justice
<b>Ethics Initiative Principles</b>	Trust Transparency	Rule of Law	Respect Integrity Accountability	Fairness Viability

# The Issues



- Public health nursing is grounded in the values of social justice, respect and worth of all people, especially the vulnerable
- The national health care agenda may influence the opportunity to make a difference in how vulnerable populations are served, disparities addressed and lack of equity in health care confronted
- Greater numbers of uninsured and underinsured individuals who seek services



# The Justice Continuum



## Market Justice- People deserve what they earn

- Individual rights
- Individualism
- Personal Freedom & responsibility
- People deserve what they earn
- “Bottom Line” driven – profits and cost effectiveness
- Limited government infringement on individual rights

## Social Justice- People have rights by belonging to a community

- Common good
- Community
- Collective obligation
- All person are entitled to a basic quality of life
- Recognition of hidden costs
- Stewardship of the future
- Government has an obligation to assure a basic standard of living

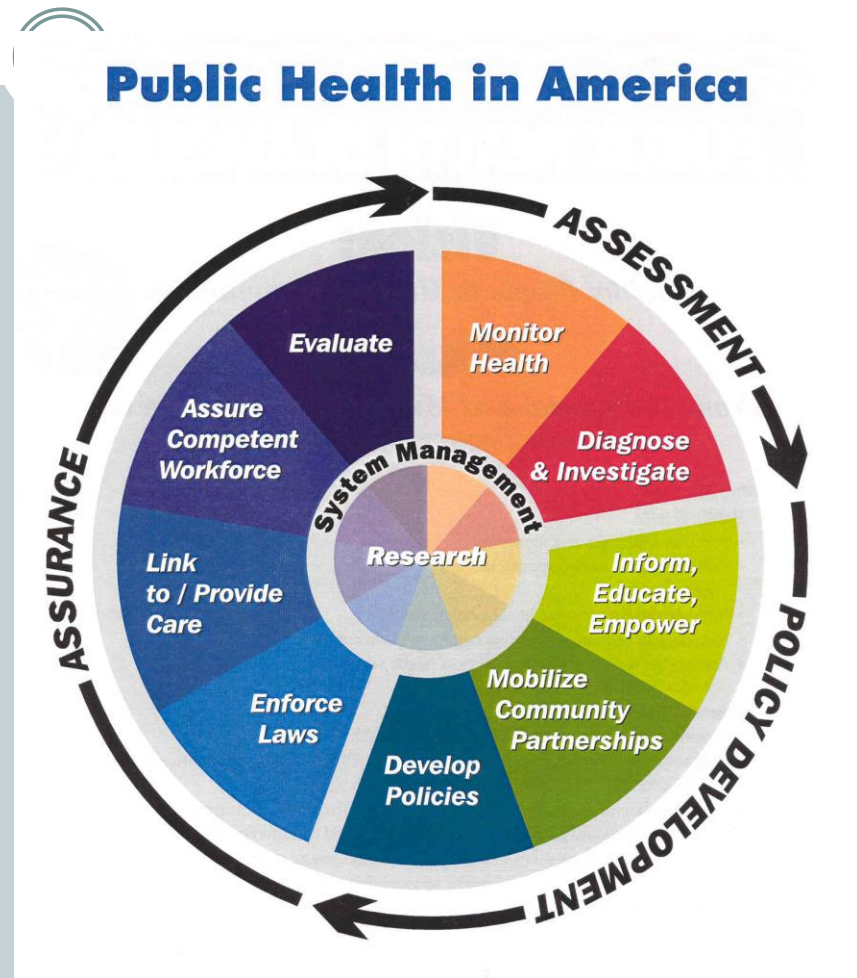
# Community/Public Health Nursing Competencies



- Analytic assessment skills
- Policy development/program planning skills
- Communication skills
- Cultural competency skills
- Community dimensions of practice skills
- Basic public health sciences skills
- Financial planning and management skills
- Leadership and systems-thinking skills

# Core Public Health Functions

- Assessment
- Policy development
- Assurance



# Service-Learning



- A teaching and learning strategy that integrates meaningful community service with instruction and reflection to enrich the learning experience, teach civic responsibility, and strengthen communities.
- Service-Learning Projects (20 years)
- Child Care, Schools, Churches, Corrections, Community Centers
- Team-Based Strategy

# New Assignment: Opinion Editorial



- Op-eds are powerful tools for influencing public opinion
- Policy reform occurs when there is a combination of demand from communities and a contingent of legislators attune to the need
- Being an advocate for health care is an integral part of the professional nursing role
- Format: brevity, clarity, accuracy and thoroughness

# The Community

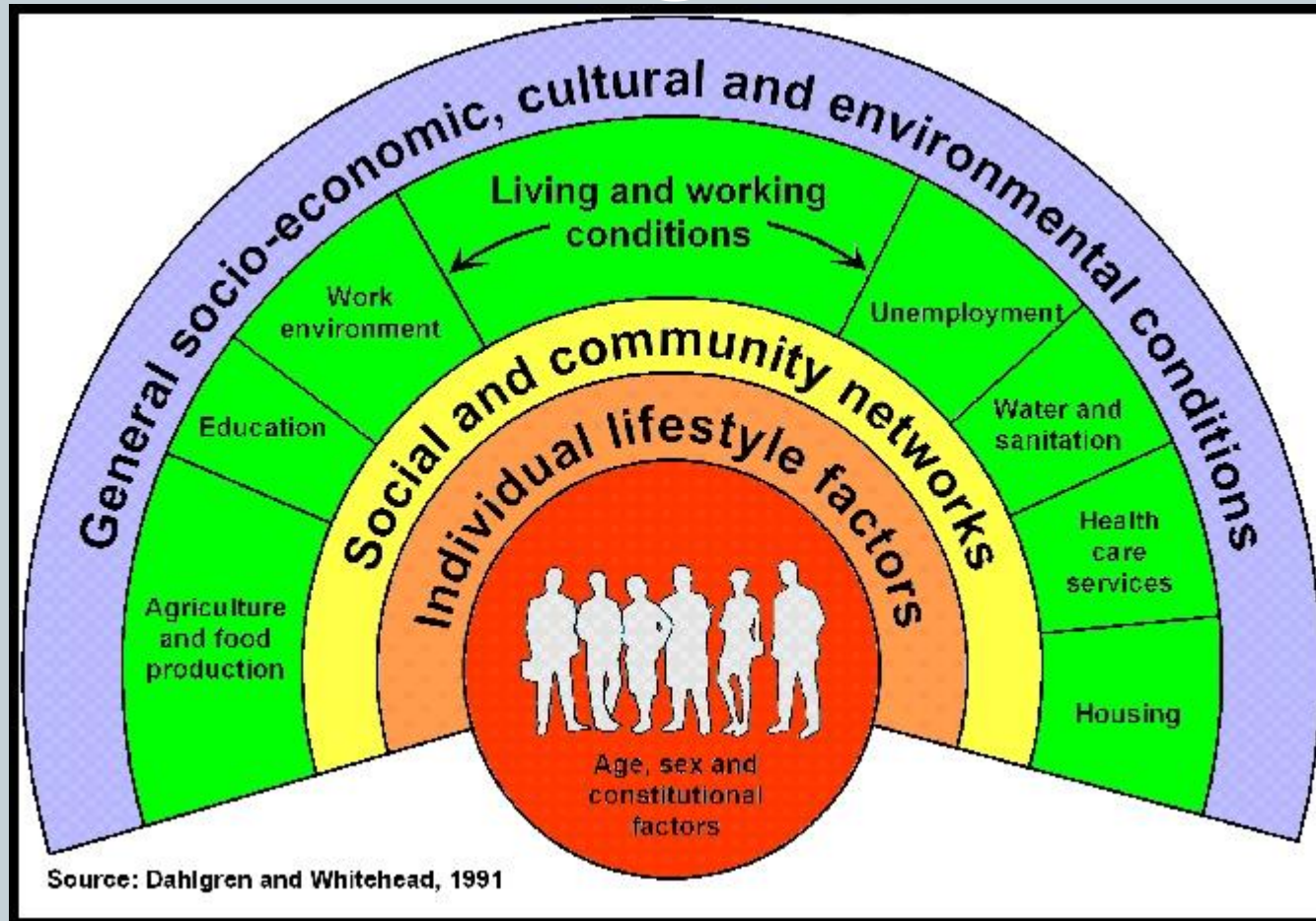


# El Paso County



- Largest county in the State
- 18% of children live in poverty
- 28% of children are in single-parent homes
- 28.5% of children ages 2-14 years of age are overweight and 12.5% are obese in Colorado
- 44% of zip codes in El Paso County has access to a health food outlet (grocery store, farmer's market), below the State average of 59%
- 78% of students' complete high school in 4 years in Colorado. Harrison School District rate falls below 70%.

# Social Determinants of Health Model





# A child's zip code is more of a determinant than its genetic code



American Public Health Association

# Community Centers



- Meadows Park, Deerfield Hills, Hillside, Westside
- Child Care Program, After-School Programs and Teen Programs
- 2010 City/County Budget Cuts
- Lack of quantitative data to support need and outcomes of community center programs

# Public Health Nursing Practice



# Targeted use of Evidenced Based Intervention



- Nutritional healthy eating, active living intervention
- 5-2-1-0 Let's Go! ([www.letsgo.org](http://www.letsgo.org))
  - 5 fruits and vegetables
  - 2 hours or less of screen time
  - 1 hour of physical activity
  - 0 sugary beverages

# Standardized Assessment Measures



- Omaha System of Documentation & Information Management (Martin, 2005)
- Knowledge, Behavior & Status as a rating scale for outcomes.
- Rubrics developed for K, B, S for nutrition & physical activity

# Strengthen Community & Business Partnerships



Goal: To expand and strengthen community and business partnerships for student learning by creating service-learning opportunities.

Goal: Create a multi-sectoral (business, education, government) collaboration to enhance community engagement and build community capacity for challenging change and having a collective impact

# The Colorado Community Center Collaborative



## MISSION STATEMENT

**TO CREATE A MUTUAL VISION TO PROMOTE  
AND SUSTAIN A COMMUNITY PARTNERSHIP  
TO IMPROVE OPPORTUNITY FOR HEALTHY  
LIFE COURSE AND TO INCREASE  
INDIVIDUAL'S VISION FOR THE FUTURE BY  
ENHANCING WELL-BEING**

# Vision Statement



**TO PROMOTE HEALTH EQUITY BY  
SUPPORTING POSITIVE YOUTH  
DEVELOPMENT IN COMMUNITY CENTERS**



# Leadership Team



- City of Colorado Springs: Brian Kates
- El Paso County Department of Health & Environment (Kelly Christians, Joy Clark)
- Harrison School District #2 (Emily Epstein)
- Kaiser Permanente of Colorado (Mia Ramirez)



The diagram illustrates the Leadership Team structure. It features four light blue circles arranged in a 2x2 grid, with a central text label. A horizontal dashed line is positioned above the top row of circles. The bottom-left circle has a tail extending downwards, suggesting it is part of a larger flow or process. The text within the circles is as follows:

**CC  
Directors**

**UCCS  
Clinical  
Faculty**

**Leadership  
Team**

**Workgroup  
Taskforces**

Obesity  
Civic Engagement/Education  
Safety/Violence  
Substance Use

**Partners/  
Advisory  
Group**

5-2-1-0 Lets Go! is even a part of décor!



# Business of Change: Healthy Vending





# Community Garden Programs at all Sites



# Foundations



- Memorandum of Understanding
- National Academy of Public Health Leadership
- Communities that Care
- Social Development Strategy
- Beth-El College of Nursing & Health Sciences

# Outcomes



- Collaborative Grant Writing
- External Fiscal Agent
- Kaiser Donation
- State Intervention: CPRA/CPHA

# Summary



- **Teaching**
  - New Lecture
  - EBP Programming across all sites
  - New Assignment: Opinion Editorial
- **Service**
  - Teams, Partners, Collaborative, Staff Training, State implementation
- **Scholarship**
  - Grant Writing
  - Program: Quality Improvement Projects
  - Manuscript
  - Community Participatory Research



# References



- Border Health Foundation, (October, 2005). Logic model development: A training manual. Tucson, Arizona: Border Health Foundation.
- Hawkins, J.D., Catalano, R. F., Kosterman, R., Abbott, R., Hill K.G. (1999). Parenting adolescent health-risk behaviors by strengthening protection during childhood. Archives of Pediatric Adolescent Medicine. 153: 226-234.
- Martin, K. (2005). The Omaha System: A Key to Practice, Documentation, and Information Management. St. Louis: Elsevier Saunders.
- Rogers, V.W., Fortier, R., Motyka, E. (2012). 5-2-1-0 Goes after school: Toolkit. [www.lets-go.org](http://www.lets-go.org). Retrieved 5/15/2012.